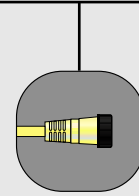


# Auxiliary Power Cordsets

- Single-ended female straight and 90°
- Double-ended cordsets straight versions

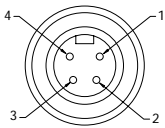
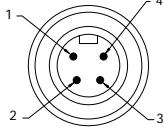


Both single-ended and double-ended 4P Mini-Change cordsets are used to connect auxiliary power to a variety of devices including active I/O modules and machine stop tees. Female connections bring power safely to the blocks by not having any exposed "live" pins. For powering active blocks the molded Mini-Change end of the cable connects to the block while the flying lead end is connected to the power supply's output. Double-ended cordsets are used to provide a quick disconnect on the power source as well as on the device powered.



- Rugged IP68 rated connectors bring power to active I/O modules reliably
- Variety of cable type, connector configuration and cable length options available for maximum flexibility

## 4P

FACE VIEWS		FEMALE*		MALE*
VOLTAGE	600V AC/DC			
CURRENT	10A			
CONDUCTOR	#16-4			
FEMALE	FIG	SINGLE-ENDED CORDSETS WITH #16 AWG ST00W CABLE 1 METER LONG		
STRAIGHT	1	104000A01M010		
90°	2	104001A01M010		
MALE	FIG	RECEPTACLE WITH #16 AWG PVC LEADS 12 INCHES LONG		
STRAIGHT WITH 1/2"-14NPT	5	1R4000A20A120		
MALE/FEMALE	FIG	BULK HEAD FEED-THRU		
	4	1R4030		
FEMALE/MALE	FIG	DOUBLE-ENDED CORDSETS WITH #16 AWG ST00W CABLE 1 METER LONG		
STRAIGHT/STRAIGHT	3	114030A01M010		
<b>CATALOG OPTIONS</b>				

\*pin out per SAEH1738-2  
see page 139 for CENELEC bus rotation

Use the following chart to modify your part's specifications

**104000A01M010**

**CABLE OPTION**

IEC (\*) COLOR ROTATION AND CENELEC PIN OUT . . . . .A38

**CABLE LENGTH**

0.5 METER . . . . . M005  
2 METER . . . . . M020  
5 METER . . . . . M050

**COUPLING NUT**

STAINLESS STEEL . . . . .ADD 1  
NICKEL-BRASS . . . . .ADD 3

### CONNECTOR DIMENSIONS

#### Female Straight

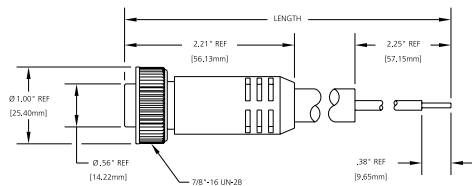


FIG 1

#### Female 90°

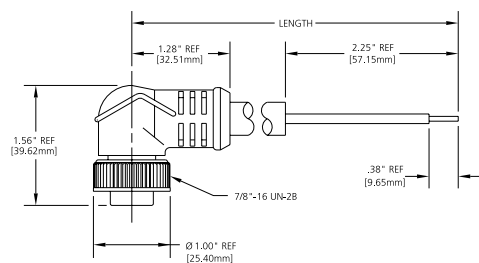


FIG 2

#### Female Straight/Male Straight

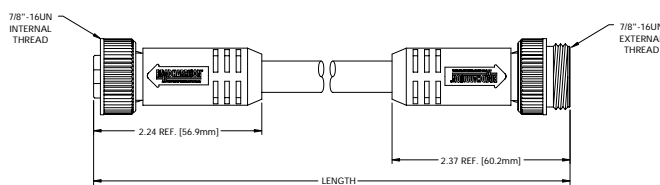


FIG 3

#### MECHANICAL

CONNECTOR FACE: PVC-UL STD 94-VO  
 MOLDED BODY: PV-UL STD 94-VO  
 COUPLING NUT: ZINC DIECAST W/ BLOCK EPOXY COAT,  
 OPTIONAL STAINLESS STEEL TYPE 303 OR  
 NICKEL-PLATED BRASS  
 CABLE: YELLOW, #16 AWG, PVC JACKET,  
 PVC CONDUCTOR INSULATION OVER 65X  
 #34 COPPER STRANDING,  
 UL STOOW CSA ST  
 CABLE DIAMETER: 0.42" (10.77 mm)

#### ELECTRICAL

VOLTAGE RATING: 600V AC / DC  
 AMPERAGE: 10A

#### ENVIRONMENTAL

PROTECTION: IP68, NEMA 6P  
 AMBIENT OPERATING TEMP: -4° TO 221° F (-20° TO 105° C)

#### CERTIFICATIONS

UL: UL RECOGNIZED, FILE NO. E46233  
 CSA: CSA CERTIFIED, FILE NO. LR6837

### RECEPTACLE DIMENSIONS

#### Bulkhead Feed-Thru

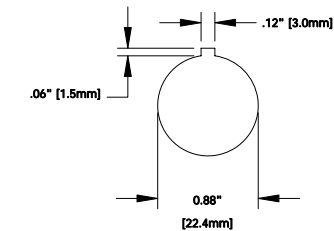
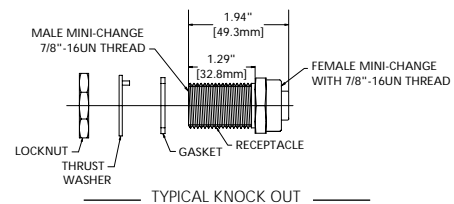


FIG 4

#### Male Receptacle

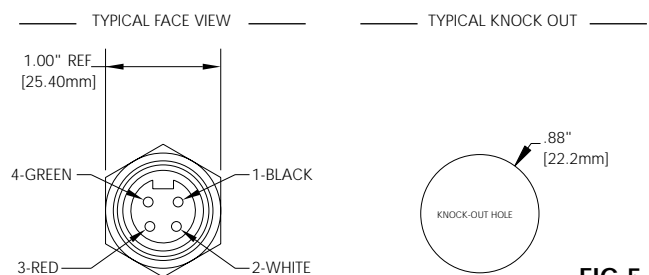
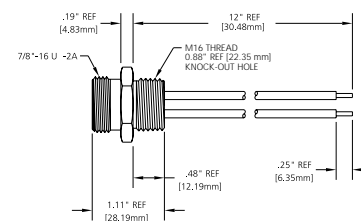


FIG 5